

GTL933 FS

SmartWay
Verified



For Trucks, Drive Position



Long Haul



Long Haul Ultra Wide Base Trailer Tire

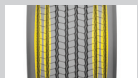
Features

Benefits



Ultra-wide base with special tread compound

Reduced rolling resistance for improved fuel economy and lower operating cost



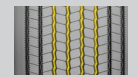
Optimized sipe design on rib edges

Minimized irregular wear



Wide tread design with consistent contact patch pressure

Excellent treadwear performance



Enhanced tread groove design

Effectively minimizes stone retention

Tire Size	Item Code	PR	LR	LI/SR	Approved Wheel	Allowed Wheel	Max Load Single	Max Load Dual	Section Width	Static Loaded Radius	Overall Diameter	Tread Depth	RPM	Weight
					Inch	Inch	(Lbs. @ PSI)	(Lbs. @ PSI)	Inch	Inch	Inch	32nds		Lbs.
445/50R22.5	100EV1281Q	20	L	161L	14.00	15.00	10,200@120	—	17.5	—	40.1	14	—	167

PR Ply Rating LR Load Range LI Load Index SR Speed Rating RPM Revolutions Per Mile

Giti manufactures SmartWay Verified Technologies. Learn more at epa.gov/smartway. Product details given for information only. Giti reserves the right to modify details of products and services at any time and without notice.

