

GDL633FS

SmartWay
Verified



For Trucks, Drive Position



Long Haul



Long Haul Ultra Wide Base Drive Tire

Features

Benefits



Ultra-wide base with special tread compound

Reduced rolling resistance for improved fuel economy and lower operating cost



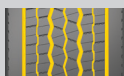
Special sipes design

Even contact pressure to minimize irregular wear



Rugged lug pattern design

Excellent drive performance and traction, with improved vehicle stability for driver confidence



Seven circumferential groove design

Efficient water evacuation for excellent wet traction

Tire Size	Item Code	PR	LR	LI/SR	Approved Wheel	Allowed Wheel	Max Load Single	Max Load Dual	Section Width	Static Loaded Radius	Overall Diameter	Tread Depth	RPM	Weight
					Inch	Inch	(Lbs. @ PSI)	(Lbs. @ PSI)	Inch	Inch	Inch	32nds		Lbs.
445/50R22.5	100EV1282Q	20	L	161L	14.00	15.00	10,200@120	—	17.5	18.6	40.1	23	518	188

PR Ply Rating

LR Load Range

LI Load Index

SR Speed Rating

RPM Revolutions Per Mile

Giti manufactures SmartWay Verified Technologies. Learn more at epa.gov/smartway. Product details given for information only. Giti reserves the right to modify details of products and services at any time and without notice.

